

MEMORANDUM

TO: HOLDERS OF PLANS AND SPECIFICATIONS

FROM: CITY OF WEBSTER CITY, IOWA AND
SNYDER & ASSOCIATES, INC.

DATE: DECEMBER 29, 2023

RE: EAST TWIN PARK SPLASH PAD PROJECT
S&A PROJECT No. 123.0256

Enclosed is one copy of Addendum No. 1 for the above referenced project. Acknowledge receipt of this addendum on the Proposal Form prior to submission.

Also please acknowledge receipt of this addendum by signing below and emailing this page back to dbreeden@snyder-associates.com as soon as possible.

I acknowledge receipt of Addenda #_____.

Name (Please Print) _____

Company _____

Title _____ Phone _____

Authorized signature _____ Date _____

BID DATE: JANUARY 9, 2023

BID TIME: 2:00 P.M.

Note: Sealed proposals will be opened by the City Staff and bids tabulated at **2:00 P.M.** on the **9th day of January, 2024**, in said City Council Chambers, City Hall, 400 Second Street, Webster City, Iowa 50595.

ADDENDUM NO. 1

City of Webster City
East Twin Park Splash Pad Project
Webster City, Iowa
December 29, 2023

From: Snyder & Associates
2727 SW Snyder Blvd
Ankeny, IA 50023
Contact: Clay Schneckloth, Phone: 515-964-2020

To: All Plan Holders of Record

This Addendum is issued to clarify, revise, add to, or delete information in the original Bidding Documents or in previous addenda and forms a part of the Contract Documents. Acknowledge receipt of this Addendum in the space provided on the Proposal Form. Failure to do so may subject bidder to disqualification. The bidder has the singular responsibility to make this Addendum available to sub-bidders that are not plan holders of record.

This Addendum consists of 4 total pages, all of which are included as follows:

Item No. 1

Contract Documents

Table of Contents

Bid Bond

The following are not required to be submitted as part of the bid bond:

- Non-Collusion Affidavit Statement
- Subcontractors List
- Bid Certification

Item No. 2

Contract Documents

Special Provisions Part 1

Add Note 17 with the following:

“17. Contractor to provide Builders Risk Insurance.”

Item No. 3

Construction Drawings

Sheet C200

Layout Plan Construction Notes

Add Notes 4B and 4C with the following:

“4.B. Approved Equal Shelter Manufacturers

1. Coverworks Recreational Architecture
586-486-1088
<https://WWW.COVERWORX.COM>

2. Superior Recreational Product
866-547-4281
<https://WWW.SUPERIORRECREATIONALPRODUCTS.COM>

4.C. Shelter to be bonded with adjacent concrete rebar.”

Item No. 4

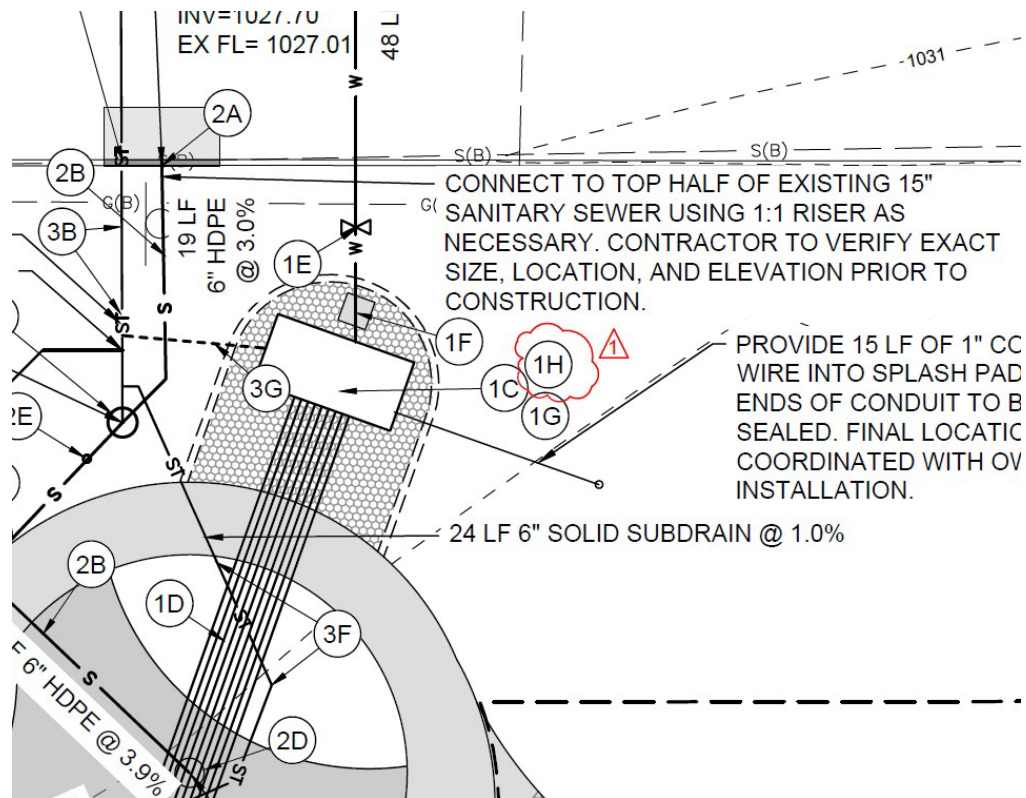
Construction Drawings

Sheet C300

Utility Plan Construction Notes

Add Note 1H with the following:

"1. H. Pressure reducing valve, contractor to furnish and install Watts 2" pressure reducing valve, lead free series LF25AUB-Z3."

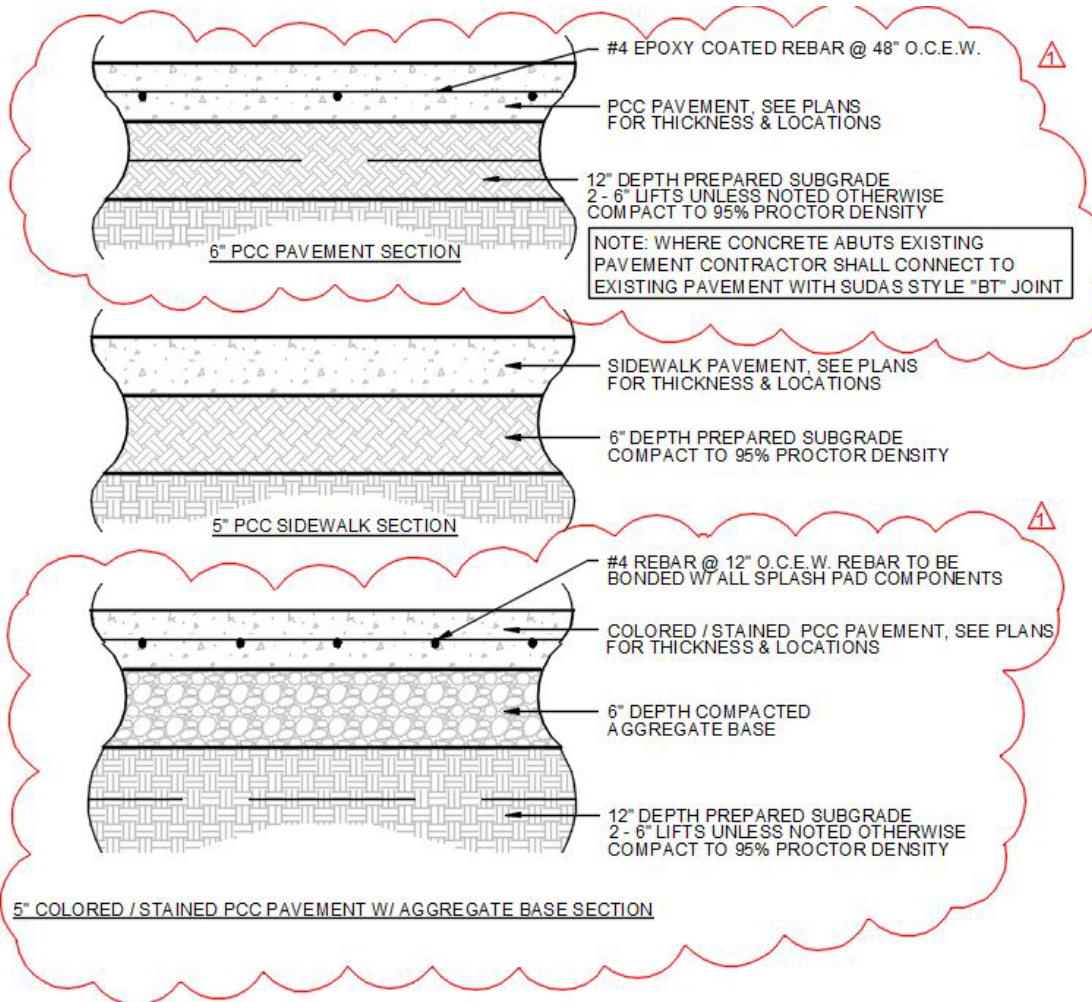


Item No. 5

Construction Drawings

Sheet C500

Revise Detail 2 Typical Pavement Cross Sections with the following:



TYPICAL PAVEMENT CROSS SECTIONS

NO SCALE

Item No. 6

Construction Drawings

Add Waterplay Pipe Routing Plan to the end of the Construction Plans

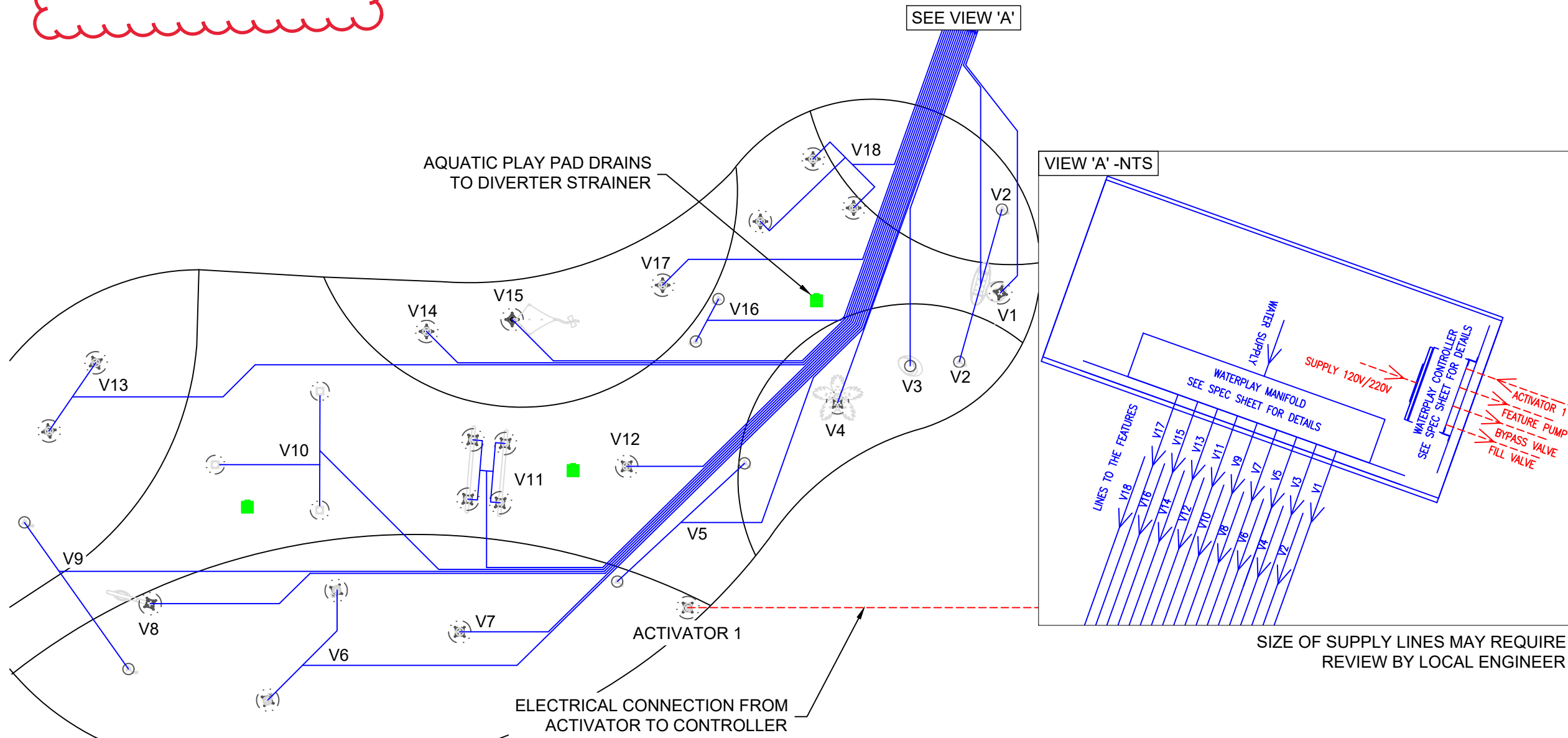
See attached plan sheet.

END OF ADDENDUM NO. 1

© Waterplay Solutions Corp. 11/23/2023 1:29:13 PM East Twin Park Playground Splash Pad_Nov2323.dwg

- NOTES:
1. THIS IS A PRELIMINARY SCHEMATIC, SITE PIPING MUST BE DETERMINED AND MEASURED ON-SITE. REFER TO LOCAL CODES TO ENSURE CODE COMPLIANCE.
 2. WATER LINES SHALL HAVE POSITIVE DRAINAGE FROM AQUATIC PLAY FEATURES TO VAULT OR LOW POINT FOR WINTERIZING AND MAINTENANCE.
 3. PRESSURE CONTROL AND BACKFLOW PREVENTER SHALL BE INSTALLED AT MAIN WATER SOURCE UPSTREAM FROM MANIFOLD VALVES, AS DETERMINED BY LOCAL AUTHORITIES.
 4. DYNAMIC WATER SUPPLY PRESSURE RECOMMENDED AT THE MANIFOLD IS 138-207 KPA (20-30 PSI). A HIGHER MANIFOLD PRESSURE MAY BE REQUIRED FOR PRESSURE LOSSES BETWEEN MANIFOLD AND FEATURES.
 5. EQUIPMENT SHALL BE EASILY ACCESSIBLE BY STAFF AND SECURED FROM PUBLIC.
 6. GPM IN VALVE TABLE IS FOR MANUFACTURER RECOMMENDED FEATURE DISPLAY.
 7. VALVE TABLE RECOMMENDED LINE SIZE BASED ON 8 FPS PIPE VELOCITY, NOT ACCOUNTING FOR PRESSURE LOSS BETWEEN MANIFOLD AND FEATURES.
 8. WATERPLAY CONTROLLER CONFIGURED FOR A POTABLE WATER SUPPLY.

ADDENDUM 1



LEG #	COMPONENT NAME	QTY/LEG	GPM	LINE SIZE FROM MANIFOLD
1	FS: WATERFALL 1	1	10	1.5 in
2	GS: MONSTER 5	2	20	1.5 in
3	FS: SURF STONE 2	1	5	1.0 in
4	FS: POLY PALM 5	1	3	1.0 in
5	GS: BUTTERCUP	2	14	1.5 in
6	FS: SPLASH BLASTER	2	6	1.0 in
7	GS: PP GROUND SPRAY (TOWER)	1	9	1.0 in
8	FS: AQUA-DROP	1	10	1.5 in
9	GS: STARLET SPRAY	2	10	1.5 in
10	GS: MOP TOP	3	30	1.5 in
11	FS: WATER-O	2	20	1.5 in
12	GS: PP GROUND SPRAY (TOWER)	1	9	1.0 in
13	GS: PP GROUND SPRAY (GEYSER)	2	12	1.5 in
14	GS: PP GROUND SPRAY (GEYSER)	1	6	1.0 in
15	FS: KITE	1	2	1.0 in
16	GS: STEADY STREAM	2	2	1.0 in
17	GS: PP GROUND SPRAY (TULIP)	1	6	1.0 in
18	GS: PP GROUND SPRAY (CHARLOTTE'S WEB)	3	9	1.0 in

11 x 17 plot

FOR INFORMATION PURPOSES ONLY. LOCAL LANDSCAPE ARCHITECT, ENGINEER &/OR APPROPRIATE AUTHORITIES HAVING JURISDICTION MUST COMPLETE ALL PARK LAYOUT, MECHANICAL & ELECTRICAL DESIGN PRIOR TO CONSTRUCTION.

DESIGNED BY:
WATERPLAY SOLUTIONS CORP

DWG NAME:
WATERPLAY PIPING SCHEMATIC

SHEET
5/5

SCALE:
3/32" = 1'-0"

DRAWN BY:
DS

DATE:
NOV 23/23

REV #:
1

NOT FOR CONSTRUCTION PURPOSES

EAST TWIN PARK SPLASH PAD WEBSTER, IA

NOV 23/23	REV DATE
DS	REV BY
DESCRIPTION	
1	COMPLETED FINAL DRAWING

WATERPLAY
BY MAKER

805 CROWLEY AVE, KELOWNA BC, CANADA V1Y 7G6
TEL. (250) 712-3393 FAX (250) 861-4814
EMAIL info@waterplay.com